


# RADIOLOGIC TECHNOLOGY

 LA ROCHE UNIVERSITY

**RADIOGRAPHERS PLAY AN IMPORTANT ROLE** in patient care. Using x-rays and computed tomography (CT) imaging, these professionals perform diagnostic imaging tests to help doctors with the evaluation and treatment of illness and disease.

Offered through an affiliation with Heritage Valley Kennedy School of Radiology, the Radiography Program at La Roche University prepares you to become an expert in the field. This two-year program offers both clinical and theoretical training for you to meet the needs of today's fast-paced medical environment.

Students who successfully complete this program are awarded an Associate of Science degree and are eligible to sit for the national certification examination given by the American Registry of Radiologic Technologist.



## CURRICULUM

### SCIENCE AND MATHEMATICS COURSES

*21 Credits*

Life Science  
Medical Terminology  
Human Anatomy & Physiology I  
Human Anatomy & Physiology I Lab  
Human Anatomy & Physiology II  
Human Anatomy & Physiology II Lab  
Physics for Health Science  
Physics for Health Science Lab  
College Algebra

### HEALTH SCIENCE COURSES

*28 Credits*

Radiologic Technology I  
Clinical Education I  
Radiologic Technology II  
Clinical Education II

Radiologic Technology III  
Clinical Education III  
Radiologic Technology IV  
Clinical Education IV  
Radiologic Technology V  
Clinical Education V  
Radiologic Technology VI  
Clinical Education VI  
Radiologic Technology VII

### ADDITIONAL REQUIRED COURSES

*3 Credits*

Introduction to Psychology

### ACADEMIC CORE CURRICULUM

*15 credits*

### FOUNDATIONS OF KNOWLEDGE

*9 credits*

Academic Reading and Writing  
Academic Writing and Research

Digital Literacy

### BREADTH OF KNOWLEDGE

*6 credits*

For the A.S. degree students must complete at least two Breadth of Knowledge courses. Twelve credits total are required, three credits each, within the following domains for the bachelor's degree.

Natural and Physical World\*  
Human Expression  
Values and Ethics  
Social Sciences  
Global Perspectives

*\*Fulfilled in major requirements*

### GENERAL ELECTIVES

*If needed*

#### Freshman Admissions

844-838-4578 | 412-536-1272  
admissions@laroche.edu

#### Transfer Admissions

412-536-1260  
transferadmissions@laroche.edu

# MEDICAL IMAGING

 LA ROCHE UNIVERSITY

**THE MEDICAL IMAGING DEGREE COMPLETION PROGRAM** at La Roche University prepares students who are RT or RDMS certified for an upward career in radiography, MRI, nuclear medicine, ultrasound and more by earning a bachelor's degree. The flexible, fully online program focuses on enhancing skills in leadership, communication, and research in the hospital setting.



## CURRICULUM

### MEDICAL COMPONENT

*RT certification – 60 Credits*

Medical Imaging/Sciences  
Current Certification

### LIBERAL ARTS COMPONENT

*21 Credits*

Fundamentals of Management  
Intro to Psychology  
Intro to Sociology  
Business Communications  
**or** Technical Writing  
Probability & Statistics  
**or** Statistics in Health Care  
Oral Communication  
**or** Professional Presentations  
Biomedical Ethics

### HEALTH SERVICES COMPONENT

*9 Credits*

Management and Leadership in the Health Services  
Health Policy in the Health Services  
Health Finance in the Health Services  
3000 level course

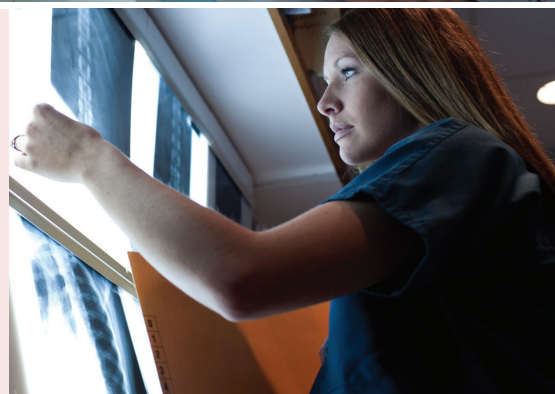
### ACADEMIC CORE CURRICULUM

*9 credits*

Academic Reading and Writing  
Academic Writing and Research  
College Algebra

### GENERAL ELECTIVES

*21 Credits*



**LA ROCHE UNIVERSITY** | 9000 Babcock Blvd. | Pittsburgh, PA 15237 | [laroche.edu](http://laroche.edu)

### Transfer Admissions

412-536-1260

[transferadmissions@laroche.edu](mailto:transferadmissions@laroche.edu)

**NON-DISCRIMINATION POLICY:** La Roche University does not discriminate on the basis of race, color, national origin, sex, disability, age, or religion in its programs and activities. The following persons have been designated to handle inquiries regarding the non-discrimination policies: Vice President for Student Life & Dean of Students | 412-536-1069, Assistant Director of Accessibility and Equity | 412-536-1177, Associate Vice President for Human Resources | 412-536-1115. For further information on notice of non-discrimination, call 1-800-421-3481.